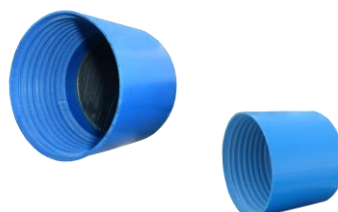


ACCESSORIES



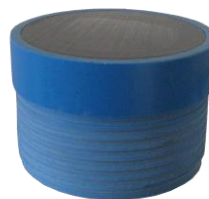
Conical PVC threaded bottom plugs for making easier the pipes descent.



PVC threaded bottom plugs for flush jointed pipes.



PVC gluing bottom plugs. They are cheaper than threaded plugs and they have overall dimensions same as the pipes they are glued on.



PVC male threaded caps for the upper closure of the well.



PE-LD transparent caps: a very low price product used to close the upper part of the well or to protect the pipes threadings.



PVC puller, especially low price puller, it is used for pipes installation.



Female threaded PVC reducer with male/male threaded PVC adaptor, they are used to join pipes with different diameters when the pumping room is larger than the production well.



PVC sleeves to join male/male threaded pipes.



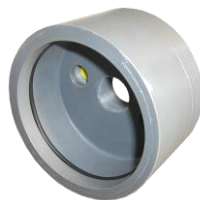
Steel puller bell-shaped, suitable only for pipes with socket (threaded ends with socket or smooth ends with socket). When the ring is lifted, the puller fits under the socket.



Steel puller for threaded pipes, with wheel to fasten and unfasten the connection with the pipes.



PVC well closure heads with central hole, small plug and fairlead. The heads are assembled with two PVC flanges put together and fastened with screws and bolts, they are used to guarantee well protection against possible contaminations.



PVC snap-off well closure heads, with central hole, small plug and fairlead. Compared to normal well closure heads, they are cheaper and they are faster to put because they do not have screws and bolts, a rub gasket (o-ring) inside the head guarantees the well isolation from external environment.



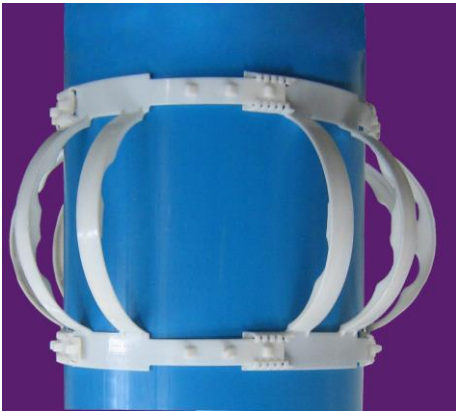
Steel clamp to hold up the pipes during descent phase, to avoid thread buckling the clamp must be put at least at 300 mm distance from the pipe socket.



Steel nippers for pipes recovery in site investigation wells. The tightening bolt has undergone a special heat treatment and is equipped with non-slipping head.



Dielectric joint. It is essential to guarantee the permanent electric isolation between two different materials when the pipes column is composed with pipes of different materials (e.g. stainless steel and carbon steel), in addition the dielectric joint protects the lower part of the pipes column from possible stray currents.



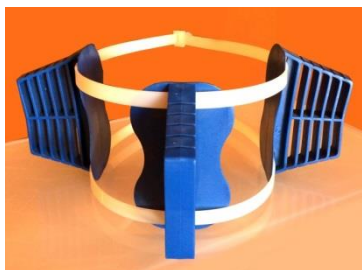
Plastic centralizer to keep the pipes in central position during descent phase. The centralizer is suitable for every diameter dimension because it is composed of single units linked together by an hinge, therefore, the number of the units depends on the pipe diameter. The plastic material of which the centralizer is made of makes it very elastic and consequently very flexible in case of ground irregularity, moreover, the little arcs are smooth in order to easily slip inside the borehole. The total overall dimensions of the centralizer is 100 mm more than the pipe diameter (50 mm every little arc).



Portable water level probe for water table measurement in water wells, piezometer wells etc... This instrument consist in a round measurement cable, available in various lengths from 10 m to 500 m, with 304 stainless steel ferrule 12 mm. The probe is also equipped with cable winding device, handle for transport and printed circuit board with buzzer, warning light and flat battery led.

HDPE tank for liquids transport, surrounded by a metal framework. In the upper side the tank has an inlet hole \varnothing 135 mm closed by a rub gasket equipped cap, while in the lower side it has an outlet hole \varnothing 50 mm with tap. Volume max 1000 lt, dimensions: height 116,30 cm, base 120 x 100 cm.



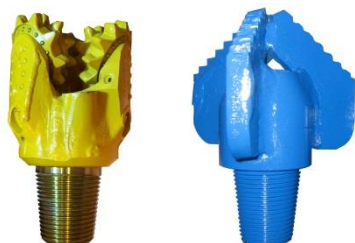


Plastic centralizer to keep the column in a central position during the phase of descent. Is composed of three clamps with fins to make it adaptable to different diameters of the perforation. The fins, equidistant between them, can be cut to fit the required dimensions.

Plastic centralizer to keep the column in a central position during the phase of descent. Is composed of individual units that fit easily between them: a fixing clamp and three small sections of pipe of various diameters based on the occurrence, equidistant between them. Is an effective and economical solution.



Expansion plug lockable in plastic material with high resistance. Available in various diameters, they are resistant to corrosion and erosive action of brackish water.



Drag and roller bits, with different characteristics depending on the formation of the land in which you make the hole.



Polyethylene cup applied with pressure. Available in various diameters.

Wells safety latch, in painted steel. Available in diameters of 90, 150 and 200 mm, standard length 500 mm.



Polypropylene corrugated core box for boring, having 3 compartments and cover. This is an economic solution, but still advantageous in terms of lightness and maneuverability. Dimension and number of compartments can be personalized.



PEAD core boxes for survey, having 5 compartments. Available with lid shaped to facilitate the overlap, handy and resistant.



Wood core box for boring available in OSB polywood panel and/or multilayer version, having 4 compartments. It is available with cover, it is resistant and environmentally-friendly, thanks to the very low environmental impact.

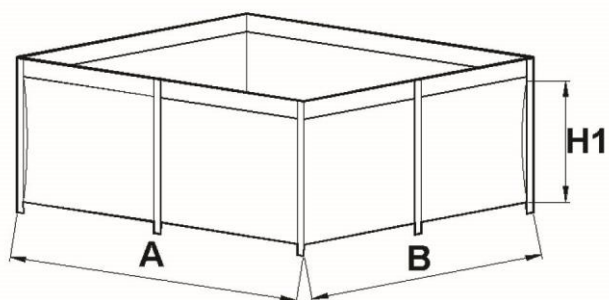


Flexible tank to contain liquids, made of extra-strong polyester fabric coated with plastomer, supported by an easily assemble metal frame. Volume from 1 m³ to 60 m³ (depends on the tank dimensions, see chart below). When unused the tank can be refold and reduced to a minimum size.



Volume	Dimensions A x B m	Height* H1 m
1 m ³	1,1 x 1,1	1,10
2 m ³	1,35 x 1,35	1,10
4 m ³	1,90 x 1,90	1,10
6 m ³	2,35 x 2,35	1,10
8 m ³	2,70 x 2,70	1,10
10 m ³	3,00 x 3,00	1,10
12 m ³	3,30 x 3,30	1,10
15 m ³	3,70 x 3,70	1,10
20 m ³	4,30 x 4,30	1,10
30 m ³	5,40 x 5,40	1,10
40 m ³	8,60 x 4,30	1,10
60 m ³	12,90 x 4,30	1,10

* Maximum liquid height



Very fine drainage gravel, round-shaped, washed, available in different sizes (2,00/3,00 mm, 3,00/4,00 mm etc.) packaged in big bags or 25 Kg small bags.



PANCERA PANCERA PANCERA PANCERA PANCERA PANCERA PANCERA PANCERA PAN